

BUILD THE FUTURE



Let's build the future together

"We've got the planning permission (at last!) and we aim to start the building work in the autumn of 2022, with the fund raising starting early in the year.

But before that, let's all look at the plans for the church, and all the things that will be able to happen in the building in the future!

We want to be together, and worship together, and enjoy time together, and bring Jesus to our community, in a new and inspiring building.

Our church building is a place of invitation and hospitality. It provides a recognisable focal point for the wider community. The generations before us rebuilt, extended, expanded and refurbished the church building that they inherited - **all with the purpose of reaching the community** as it was then.

The baton is now in our hands, and it is time to run our part of this 1000-year-old marathon race."

Paddy Gleave, Pete Ward and Tom Peryer



Main entrance

Church layout

← A

B

C

D

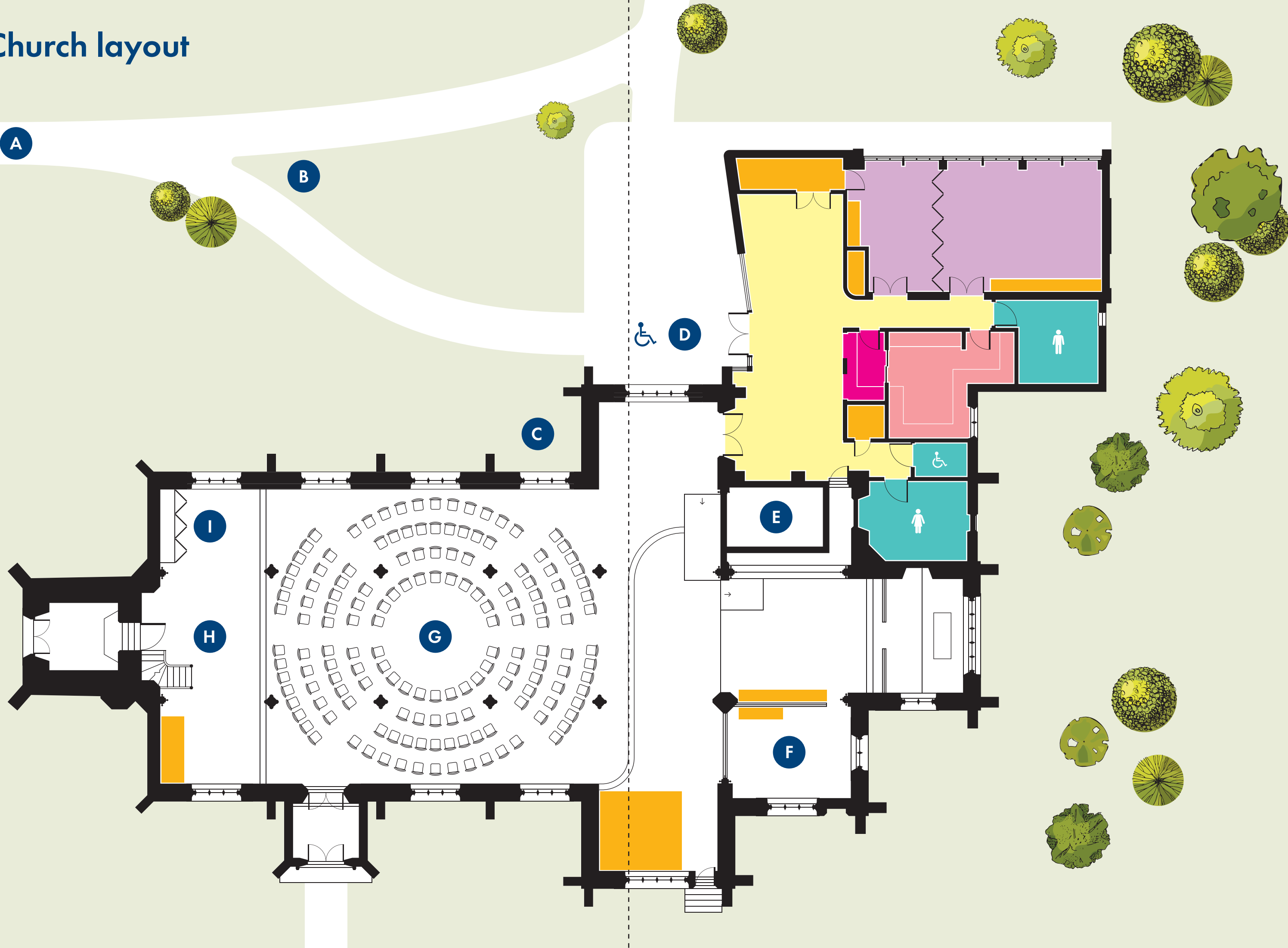
E

F

I

H

G



What's new?

Entrance Hall

Spacious foyer - a space to gather and chat, before and after any events, services and activities in the whole building - and used as a café.

Registration

A registration/welcome desk for events and conferences. Also doubles as a servery for events and can open into kitchen space.

Kitchen

Full catering kitchen. Providing refreshments for events, daytime drop in café or catering for 100+ people for larger events.

Storage

More and better storage, including a dedicated flower cupboard. To allow the beauty of the space to be seen, appreciated and kept uncluttered.

Meeting rooms

Two separate rooms or opened up to form one larger space. Adaptable for events, activities, meetings as well as full crèche facilities.

Toilets

Brand new modern toilet facilities with separate women's, men's and disabled rooms (including baby-change).

- A Car park** Enlarged with 12 further spaces plus improved access and exit to reduce congestion
- B Churchyard** Better pathways, new lighting and designed to encourage more bio-diversity in the surrounding areas
- C Appearance** A modern, more welcoming front to the ancient building to attract regular church-goers, newcomers and visitors
- D Main entrance** Large glass doors creating an open, welcoming feel with smooth, even ground from car park to entrance area
- E Organ** Virtually untouched for 130yrs, this historically significant instrument will receive a full restoration and a new lease of life
- F Remembrance chapel** Restore, enhance and declutter to make for a more attractive and peaceful area
- G Seating** 400 high-quality, comfortable, free-standing, stacking chairs to provide flexibility for services and events
- H Gallery** Previously hazardous and little used, a new safety barrier will be added to make for a more usable space
- I Drinks servery** Upgrade the capacity



Audio visual
Improved sound, screens and cameras throughout. Much better for live events and for anyone watching at home via live stream.

Disabled access
Easy access through main entrance for wheelchair users, buggies and those less mobile. Level floors throughout apart from the chancel and dais.

History
Currently there is very little information for visitors. Displays to be added to highlight All Saints history and some of the many historical figures at rest.

Decoration
Completely cleaned and redecorated everywhere to provide a fresh, modern and welcoming environment for all.

Heating
More flexible and ultimately cheaper to run. Including under-floor heating and a completely new floor throughout the church.

Lighting
Beautiful and versatile lighting that is controllable, energy-efficient and low cost to run that highlights the beauty of the church.

Open and active every day of the week

Here's just a flavour of how a week could look utilising the new and improved spaces

Sunday

- Morning service with baptism party, followed by a 'welcome lunch' for all
- Crèche during service with separate areas for 0-1's and for 2-3's
- Afternoon service with chairs in the round, in the nave or the chancel
- Evening service with full audio-visual effects and atmospheric lighting



Monday

- Café open, with Wi-Fi work space
- Church open for prayer and visitors
- PCC meeting in evening
- History Society talk in main church

Tuesday

- Tuesday morning service
- Themed activity day for WASPS, including demo of restored organ
- Film evening in the main church
- Bath youth leaders in meeting rooms

Wednesday

- Postnatal group in meeting rooms
- Funeral with wake and full catering
- Church open for prayer and visitors
- Home group in meeting rooms
- Drama workshop in the main church

Thursday

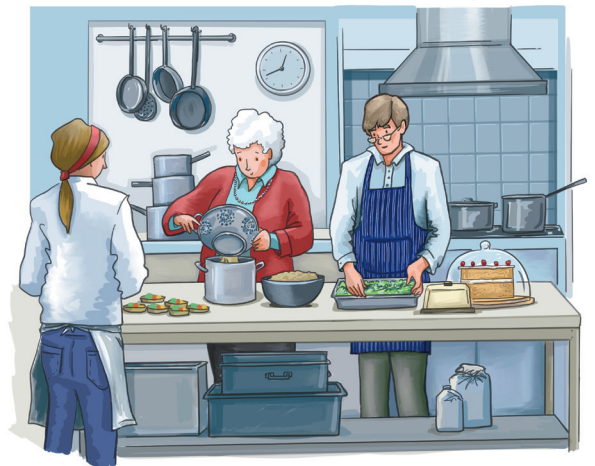
- Church open for prayer and visitors
- Parenting class in meeting rooms
- Family cooking course in the kitchen
- Women's supper party in kitchen and meeting rooms
- Community choir rehearsal

Friday

- Messy Church for families
- Seniors tea party
- Art exhibition in church
- Dinner to launch Alpha course in main church

Saturday

- Dads and Lads Breakfast
- Wedding with reception, full catering and evening celebrations
- Chamber music concert. Foyer used as reception area



Contact us

Church All Saints Church, Church Street, Weston, Bath, BA1 4BU
Church office All Saints Centre, High Street, Weston, Bath, BA1 4BX
01225 447663 | office@allsaintsweston.org.uk
allsaintsweston.org.uk

Illustrations Finola Stack | finolastack.co.uk
Design Philip Field | philipfield.com